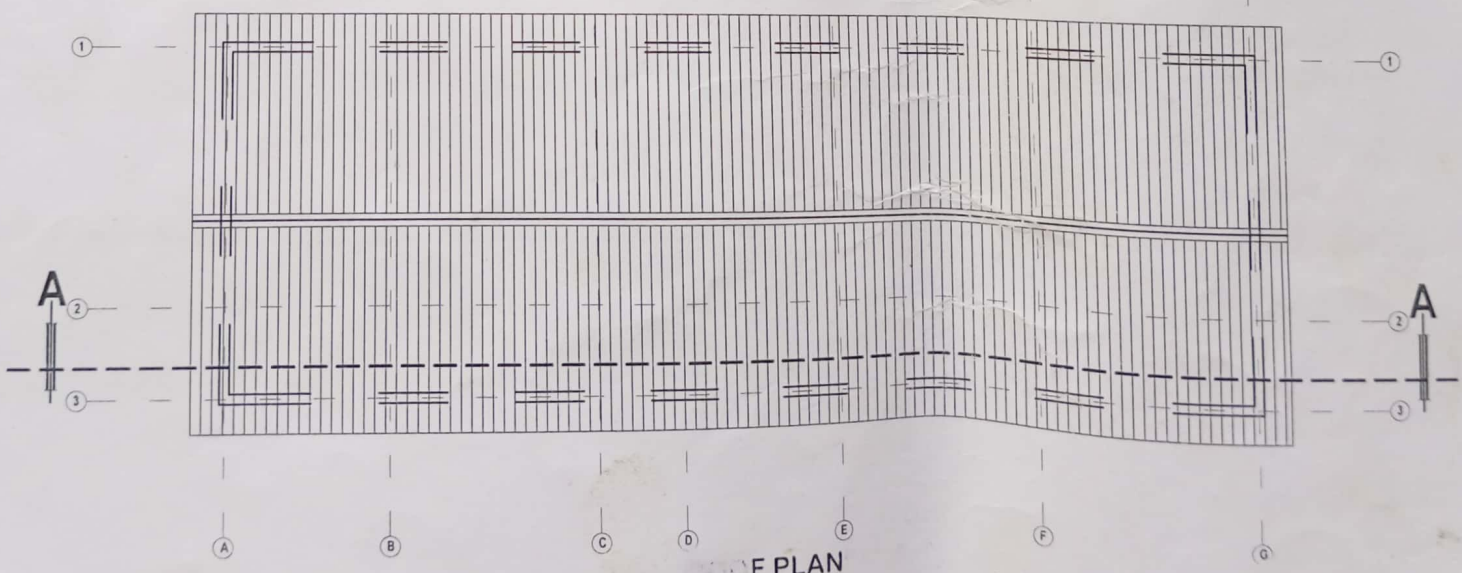
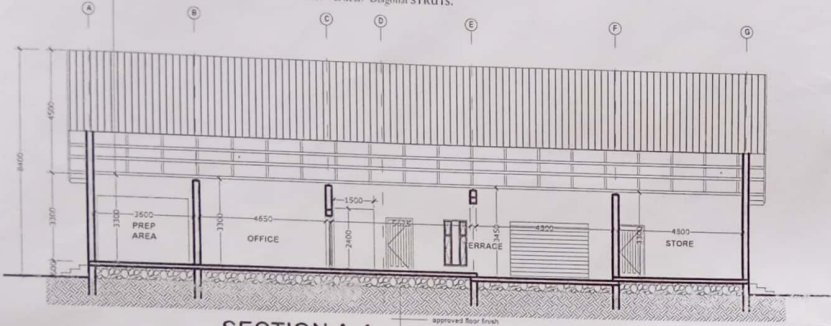


FISHERY UNIT



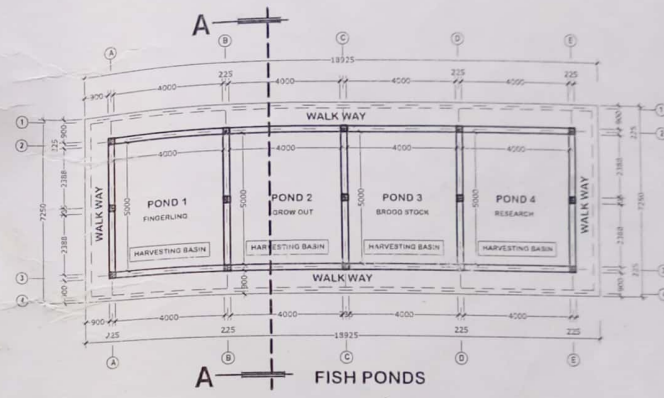
ROOF PLAN

- 450mm Wide Aluminium RIDGE CAP.
- Long span Aluminium ROOFING SHEETS.
- 75mm x 90mm Treated HWD Timber PURLINS @ 900mm c/c.
- 150mm x 75mm Treated HWD Timber RAFTERS @ 1200mm c/c.
- 100mm x 50mm Treated HWD Timber Vertical/ Diagonal STRUTS.

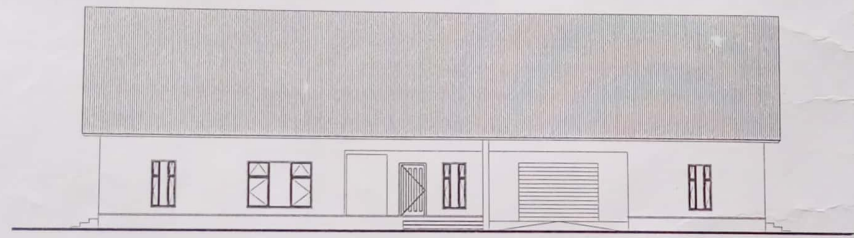


SECTION A-A

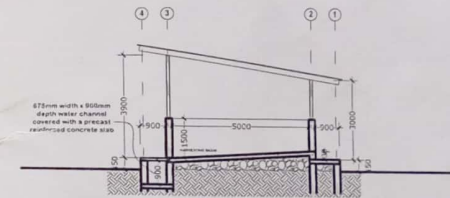
- approved floor finish
- 150mm thick concrete floor slab
- 450mm thick hardcore filling
- compacted laterite filling
- foundation to struct. engineer's detail



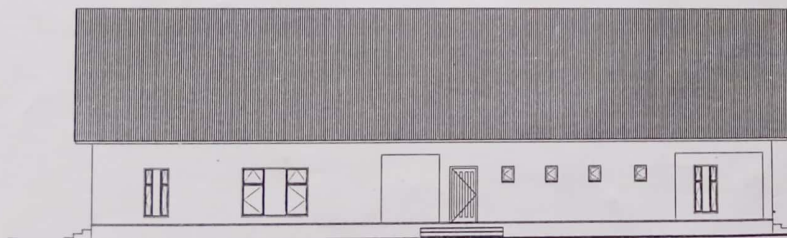
FISH PONDS



FRONT ELEVATION



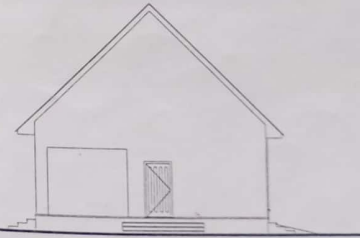
SECTION A-A



BACK ELEVATION



RIGHT ELEVATION



LEFT ELEVATION



**FISHERY UNIT
3 DIMENSIONAL DRAWING**