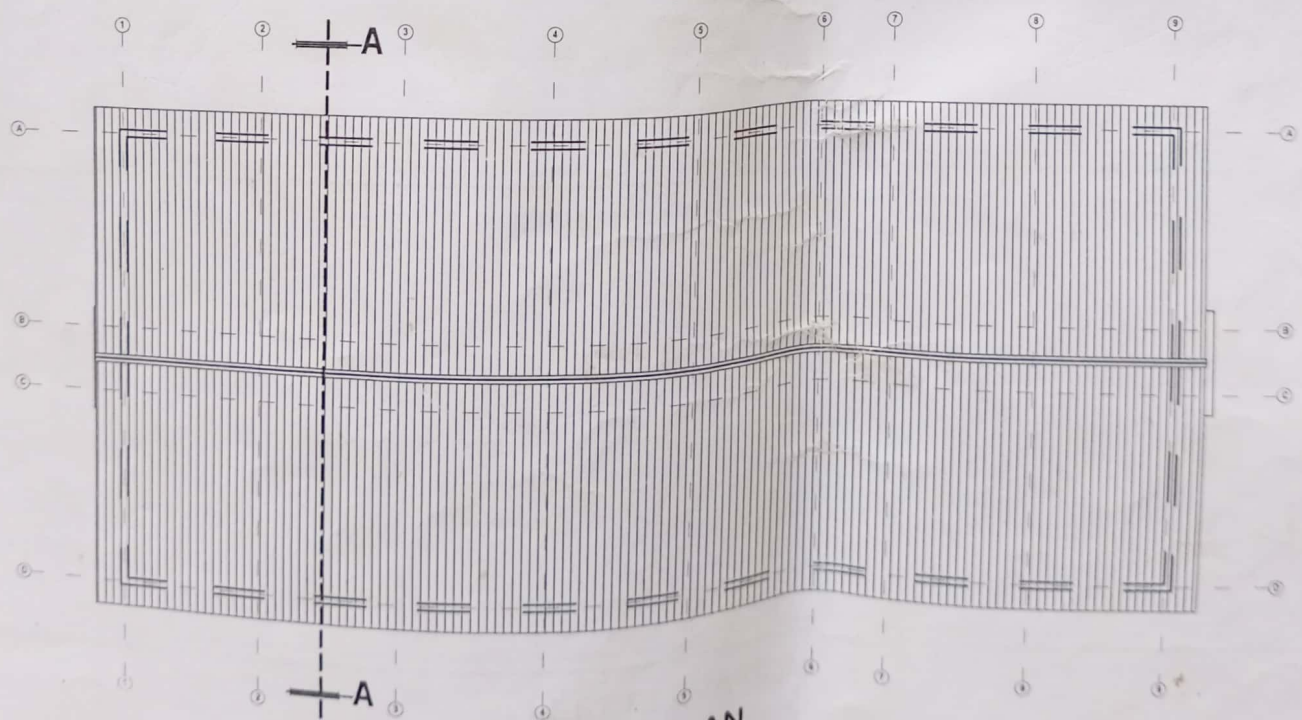


Wallowing area
284 blocks

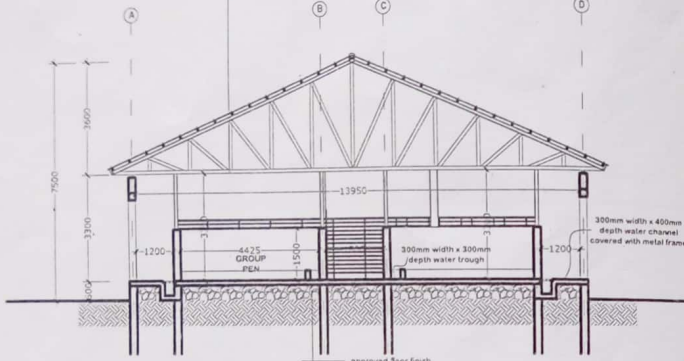


PIGS PEN (floor plan)



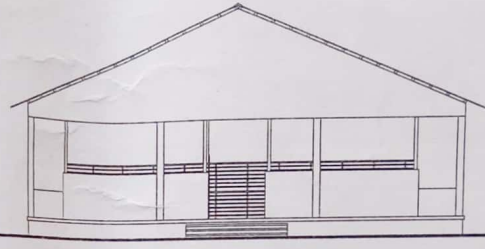
ROOF PLAN

- 450mm Wide Aluminum RIDGE CAP.
- Long span Aluminum ROOFING SHEETS.
- 75mm x 50mm Treated HWD Timber PURLINS @ 900mm c/c
- 150mm x 75mm Treated HWD Timber RAFTERS @ 1200mm c/c
- 150mm x 75mm Treated HWD Timber TIE-BEAMS @ 1200mm c/c
- 100mm x 50mm Treated HWD Timber Vertical / Diagonal STRUTS.

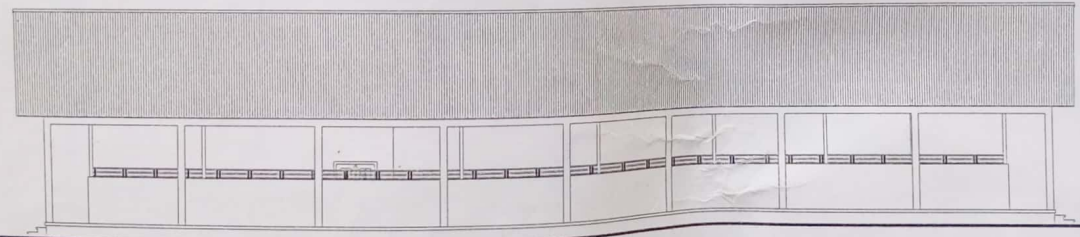


SECTION A-A

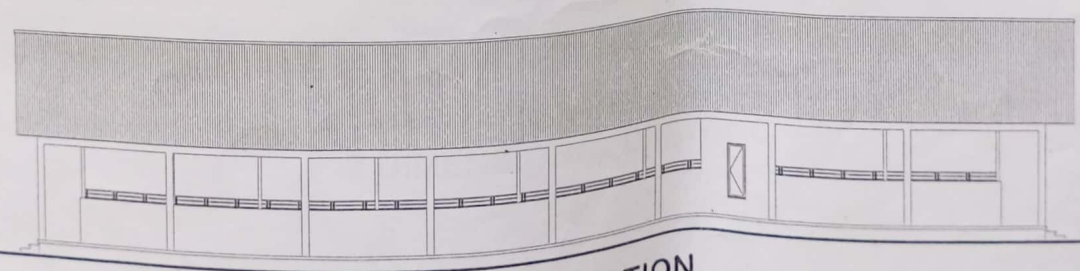
- approved floor finish
- 150mm thick concrete floor slab
- 450mm thick hardcore filling
- compacted laterite filling
- foundation to struct. engineer's detail



TYPICAL FRONT AND BACK ELEVATION



RIGHT ELEVATION



LEFT ELEVATION



PIGS PEN
3 DIMENSIONAL DRAWING